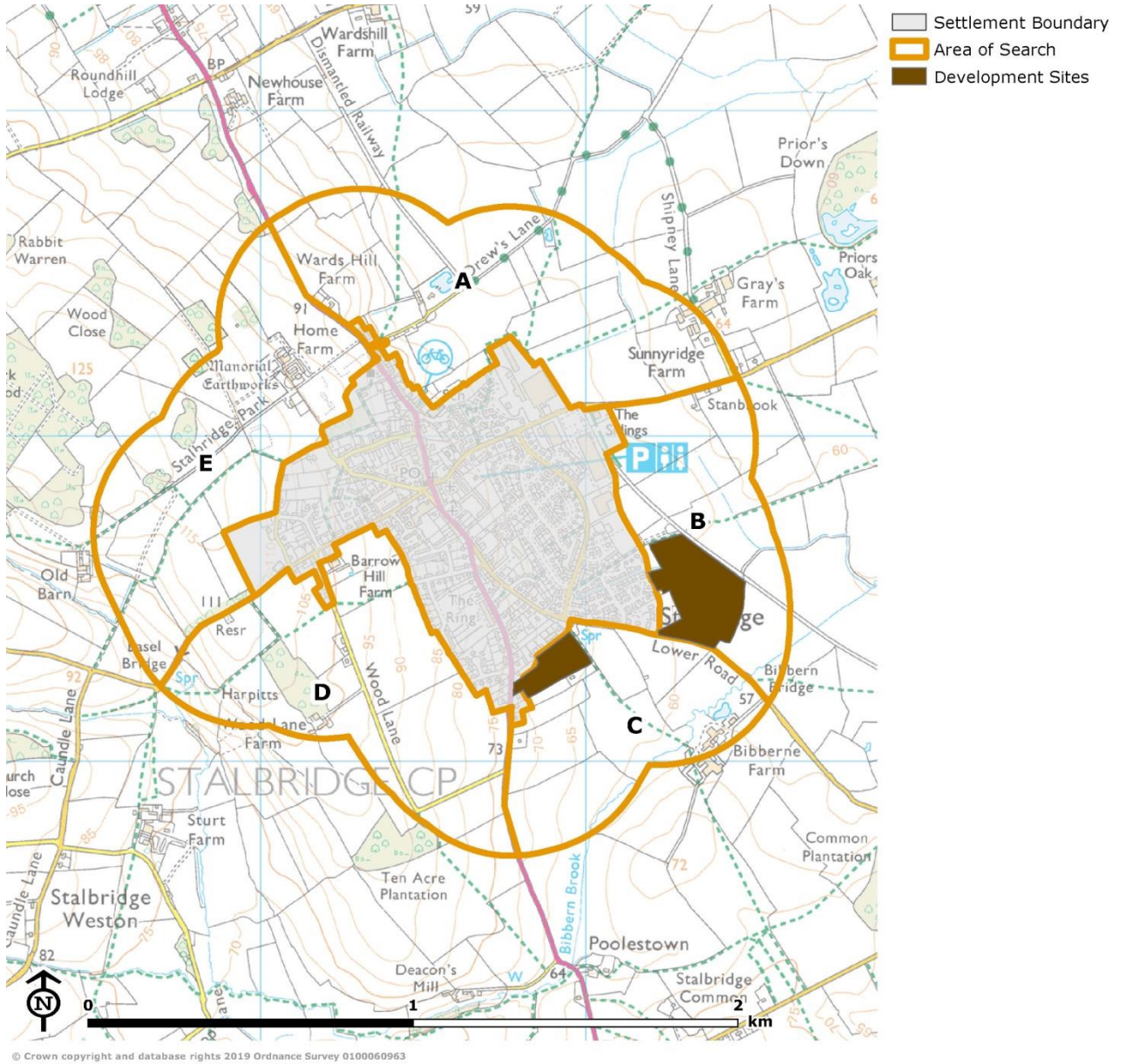


5 Stalbridge: Stage 1 assessment

5.1 The areas of search which form the spatial framework for the Stalbridge Stage 1 assessment are mapped below.

Figure 5.1: Areas of search for Stalbridge



Area of Search Assessments

Area of Search Code & Name	Landscape Character Area(s)	Issues and options recommendation	Development potential?	LUC high-level landscape analysis	Landscape score (RAG)	LUC high-level heritage analysis	Heritage score (RAG)	Take through to Stage 2? (Y/N) <i>Explain location if partial</i>
A: Land between A357 and Station Road	North Dorset Limestone Ridges and Blackmore Vale	Impacts on the landscape. Possible highways constraints relating to the capacity of the highway network at Stalbridge.	✓	<ul style="list-style-type: none"> Gently sloping topography ranging from 90m AOD in the north-west to 60m AOD in the east. Fields are generally medium-large sized and used for a mixture of arable and pastoral farming. Fields are primarily enclosed by thick hedgerows. There is a small area of traditional orchard priority habitat along Drew's Lane. The south-western corner of the area of search is within the Stalbridge Conservation Area. Settlement is limited to occasional farms including Wards Hill Farm and Sunnyridge Farm. 		<ul style="list-style-type: none"> A small parcel of the search area will have a direct impact on the Stalbridge Conservation Area. The remainder of the area is within the setting of the conservation area and forms the rural backdrop for the town, illustrating the important history of the town's agricultural commerce. Potential to affect the setting of a number of listed buildings, including the grade II* listed Church of St Mary. The HER records a couple of low-value post-medieval industrial assets within the area. The HLC indicates that the central part of the area is comprised of enclosed medieval strip fields. A tributary of the River Cale passes through the search area and highlights a potential for alluvial deposits and geoarchaeology/archaeology typically associated with such deposits. 		<p>Landscape – Yes, take whole area through to Stage 2. The sloping landform and setting the landscape provides to Stalbridge Conservation Area may increase sensitivity.</p> <p>Heritage – Yes. The impact on the significance of heritage assets needs to be explored at Stage 2, but there is scope for further extension of the town to the south of the search area where C20 expansion has already taken place.</p>
B: Land between Station Road and Lower Road	Blackmore Vale	Impacts on biodiversity and the landscape. Possible highways constraints relating to the capacity of the highway network at Stalbridge.	✓	<ul style="list-style-type: none"> Principally flat parcel of land at an elevation of approximately 60m AOD. Fields are medium-large and used for a mixture of arable and pastoral farming. Stalbridge Site of Nature Conservation Interest is locally designated and located in the west of the area of search. Fields are enclosed by hedgerows with mature trees. Rural with occasional farm buildings although has an association with the adjacent built edge. 		<ul style="list-style-type: none"> No direct impact on any designated heritage assets. The HER does not record any archaeological assets within the area. The HLC indicates that the southern part of the site comprises medieval piecemeal enclosure. This may contain hedgerows that qualify as historically important. Bibbern Brook passes through the search area and highlights a potential for alluvial deposits and geoarchaeology/archaeology typically associated with such deposits. 		<p>Landscape – Yes, take whole area through to Stage 2.</p> <p>Heritage – Yes. The impact on the significance of heritage assets needs to be explored at Stage 2, but there is scope for further development within this search area.</p>
C: Land between Lower Road and Thornhill Road	North Dorset Limestone Ridges and Blackmore Vale	Impacts on the landscape. Possible highways constraints relating to the capacity of the highway network at Stalbridge.	✓	<ul style="list-style-type: none"> Gently sloping topography which falls towards the Bibbern Brook to the south-east. Elevation ranges between 55m and 73m AOD. Medium-large scale fields are mostly used for pastoral grazing. Fields are enclosed by hedgerows with mature trees. Trees are located along Bibbern Brook. 		<ul style="list-style-type: none"> No direct impact on any designated heritage assets. The HER does not record any archaeological assets within the area and the HLC indicates that it comprises modern enclosure. Bibbern Brook passes through the search area and highlights a potential for alluvial deposits 		<p>Landscape – Yes, take whole area through to Stage 2.</p> <p>Heritage – Yes. The impact on the significance of heritage assets needs to be</p>

Area of Search Code & Name	Landscape Character Area(s)	Issues and options recommendation	Development potential?	LUC high-level landscape analysis	Landscape score (RAG)	LUC high-level heritage analysis	Heritage score (RAG)	Take through to Stage 2? (Y/N) <i>Explain location if partial</i>
				<ul style="list-style-type: none"> Primarily unsettled although there are some dispersed properties on the outskirts of Stalbridge and Bibberne Farm. Associated with the urban edge to the north. 		and geoarchaeology/archaeology typically associated with such deposits.		explored at Stage 2, but there is scope for further development within this search area.
D: Land between Thornhill Road and Barrow Hill	North Dorset Limestone Ridges	Impacts on biodiversity, the landscape and a heritage asset. Possible highways constraints relating to the capacity of the highway network at Stalbridge.	✓	<ul style="list-style-type: none"> The area of search is at an elevation of 110m AOD in the north-west and slopes down towards Stalbridge and the stream valley to the west. Land is mostly divided into medium-large fields used for arable farming. There are also two large woodlands within the area. Harpitts woodland is identified as priority habitat. Part of the Basel Bridge SNCI is located in the west of the area of search. Most of the northern extent of this area is within the Stalbridge Conservation Area. Settlement includes properties scattered along Wood Lane as well as Wood Lane Farm. 		<ul style="list-style-type: none"> The Stalbridge Conservation Area extends into a considerable portion of the search area. The economy of the town was agricultural and so its rural setting contributes to our understanding and appreciation of its historic and aesthetic significance. The open, undeveloped nature frames the conservation area on approaches from the south, west and north. The HER does not record any archaeological assets within the site and the HLC indicates that it comprises planned enclosure. 		<p>Landscape – Yes, take whole area through to Stage 2. However, likely to be highly sensitive due to the conservation area.</p> <p>Heritage – No. Development in this area is likely to have a considerable harmful impact on the significance of the Stalbridge Conservation Area.</p>
E: Land between Barrow Hill and A357	North Dorset Limestone Ridges	Impacts on the landscape and heritage assets. Possible highways constraints relating to the capacity of the highway network at Stalbridge.	X	<ul style="list-style-type: none"> The area of search slopes gently from west (120m AOD) to east (85m AOD). Medium-large fields are used for arable and pasture farming. A playing field is located adjacent to the settlement. Well-wooded character with numerous copses and in-field trees. An avenue of mature trees creates an estate parkland character. A large part of the area of search is within the Stalbridge Conservation Area. There are two grade II listed buildings within the area of search. There are also manorial earthworks marked on the OS map. Built features limited to those associated with Home Farm. 		<ul style="list-style-type: none"> The Stalbridge Conservation Area extends into a considerable portion of the search area and the remainder is within its setting. The conservation area includes a number of listed buildings that lie adjacent to the search area and could be affected in terms of setting, especially the grade II* listed Church of St Mary. The economy of the town was agricultural and so its rural setting contributes to our understanding and appreciation of its historic and aesthetic significance. The open, undeveloped nature frames the conservation area on approaches from the south, west and north. Area also includes a large portion of historic parkland associated with the grade II listed Stalbridge Park Farmhouse, which lies within the boundary of the search area, along with the non-designated earthwork and buried remains of the former manor house and the parks grade II listed gate and gate piers. The associated keeper's cottage and old barn stand outside the search area but are historically associated with the farmhouse and are grade II listed in their own right. There is potential to affect the setting of a number of other grade II listed buildings 		<p>Landscape – No. Undulating, elevated landform with scenic qualities and located within the historic landscape of the conservation area</p> <p>Heritage – No. Development likely to have an unacceptable impact on the significance of numerous designated heritage assets.</p>

Area of Search Code & Name	Landscape Character Area(s)	Issues and options recommendation	Development potential?	LUC high-level landscape analysis	Landscape score (RAG)	LUC high-level heritage analysis	Heritage score (RAG)	Take through to Stage 2? (Y/N) <i>Explain location if partial</i>
						within the conservation area.		

Conclusions

The tables below provide information on areas of search taken through to Stage 2 to be assessed in more detail. Please refer to the previous table for more detailed reasoning behind these decisions. Some of the areas of search have been split geographically due to differences in sensitivity within them and therefore may appear in both tables. Further information on specific locations included/excluded is also provided in the tables.

Areas of search scoped out of Stage 2

Area of Search Code & Name	Notes
Scoped out on landscape/heritage grounds	
D: Land between Thornhill Road and Barrow Hill	The whole of this area has been excluded on heritage grounds.
E: Land between Barrow Hill and A357	The whole of this area has been excluded on landscape and heritage grounds.
Scoped out on other grounds	
C: Land between Lower Road and Thornhill Road (south-east)	The south-eastern edge of the area is excluded because it is within flood zones 2 and 3.

Areas of search to take forward to Stage 2

Area of Search Code & Name	Notes
A: Land between A357 and Station Road	Take forward whole area to Stage 2.
B: Land between Station Road and Lower Road	Take forward whole area to Stage 2.
C: Land between Lower Road and Thornhill Road	Take forward area to Stage 2, excluding parts of the area of search and flood zones 2 and 3 in the south-east.